

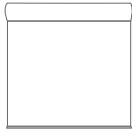
# MIDNIGHT

---

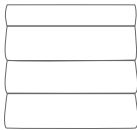
BLACKOUT (B/O)  
OPENNESS FACTOR 0%  
SCREEN FABRIC



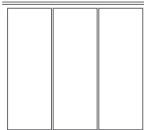
Midnight is YUMA's first blackout shade fabric made from high-quality fiberglass yarn. Coated fiberglass fabrics are durable with superior heat and reflection properties, withstanding high heat levels and ensuring excellent dimensional stability and performance over time. This characteristic makes Midnight well suited for commercial, industrial, school, and even residential use.



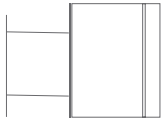
ROLLER  
SHADES



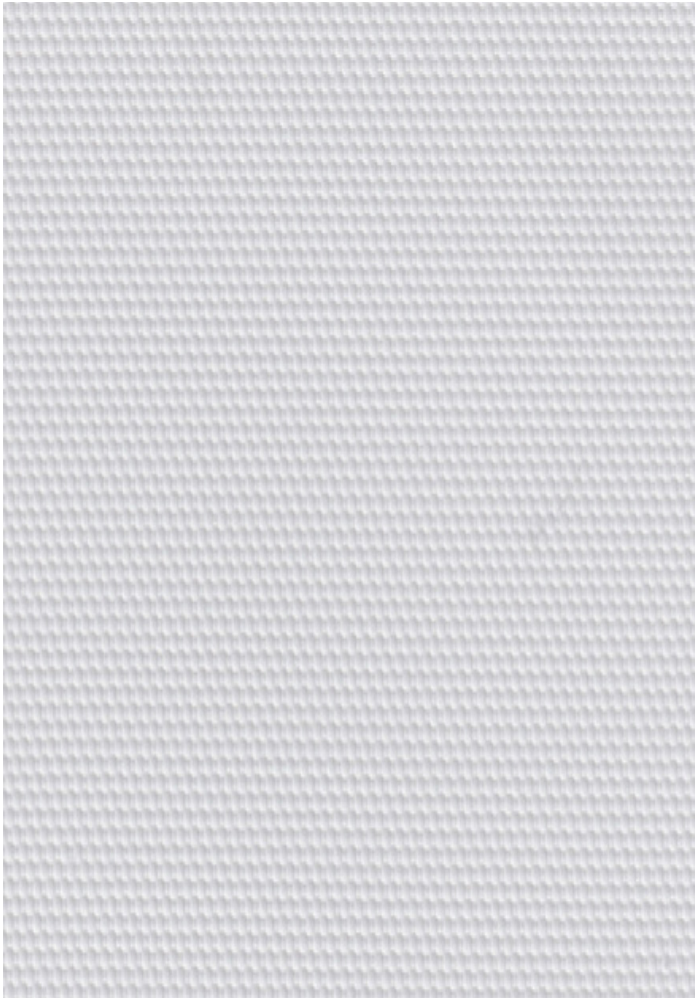
ROMAN  
SHADES



PANEL  
TRACKS



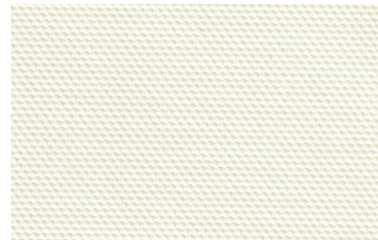
SKYLIGHT  
TRACKS



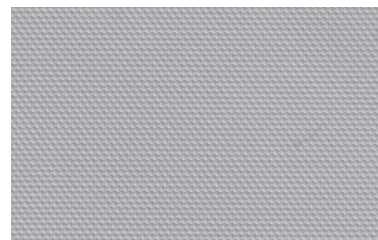
LIGHT GRAY YM-4205



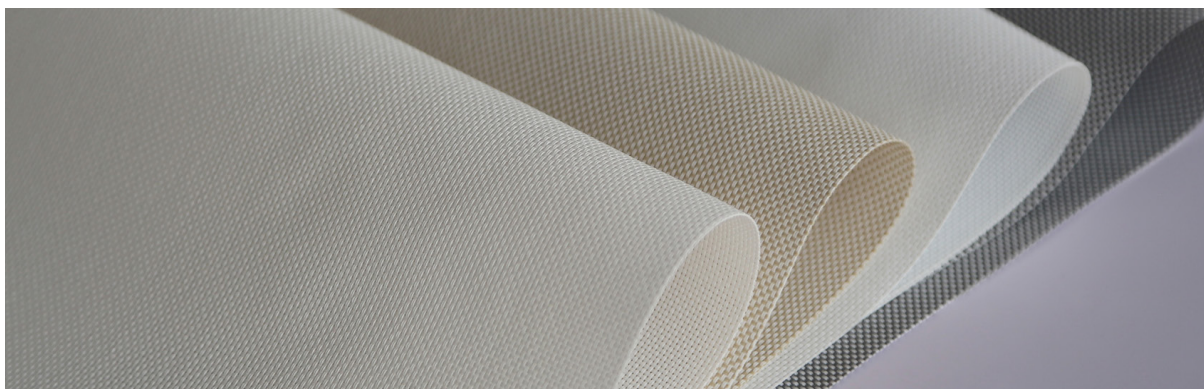
WHITE YM-4201



LINEN YM-4203



DARK GRAY YM-4206



## FABRICATION METHODS

---

Cutting: Cold Cut, Ultrasonic, Crush Cut or Laser

Seaming / Hemming: Thermal, High-Frequency, Ultrasonic or Sewing.

## PRODUCT SPECIFICATIONS

---

COMPOSITION	40% Polyester + 60% PVC
ROLL WIDTH	78" / 98" / 118"
ROLL LENGTH	32.8 yd
WEIGHT / YD <sup>2</sup>	14.14 oz/yd <sup>2</sup>
THICKNESS	.015" ± 5%
COLOR FASTNESS	6 - 8 Grade (SGS)
BREAKING STRENGTH	Warp 3493 N/5cm Weft 3020 N/5cm

## CARE AND CLEANING

---

Remove dust with vacuum cleaner or compressed air. Do not scrub. Do not use solvents or any abrasive substance which might damage the coating on the fabric. Clean with a sponge or a soft brush dipped in soapy water using mild detergent. Rinse with clean water. Leave the shade down until completely dry. You can also rub the fabric very gently with a clean white pencil eraser to remove small stains.

## CERTIFICATIONS, TESTS, AND WARRANTY

---

<b>CALIFORNIA TITLE 19</b>	<b>OEKO-TEX® STANDARD 100</b>	<b>UL GREENGUARD GOLD</b>	<b>ROHS COMPLIANT</b>	<b>5 YEAR WARRANTY</b>	<b>ASTM G-21 &amp; E-2180</b>	<b>NFPA® 701-TM</b>
FLAME RETARDANT	FREE OF HARMFUL CHEMICALS	HEALTHY INDOOR AIR QUALITY	FREE OF HARMFUL METALS	QUALITY GUARANTEED	BACTERIA & FUNGAL RESISTANCE	FIRE RETARDANT

**YUMA®**

[www.yumausa.com](http://www.yumausa.com)