

SHADE
FABRIC
collection

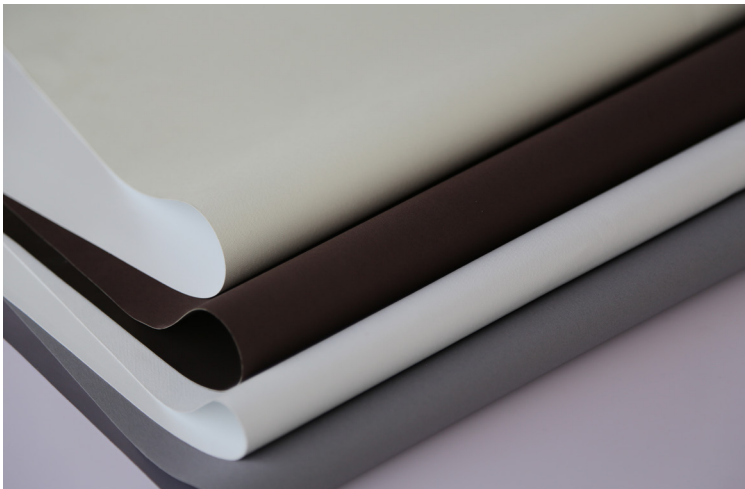
ALLURE

BLACKOUT (B/O)
0% OPENNESS FACTOR

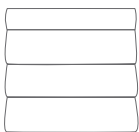


Your Solutions Weaver and Fabric Support Partner

Commercial interiors requiring a blackout roller shade with matching room side and street side colors can accomplish their exterior and interior aesthetic goals with Allure. The fabric's backside can be selected to meld nicely with glass color, allowing the shades to be consistent with the building facade's design intent.



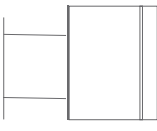
RO LLER
SH AD ES



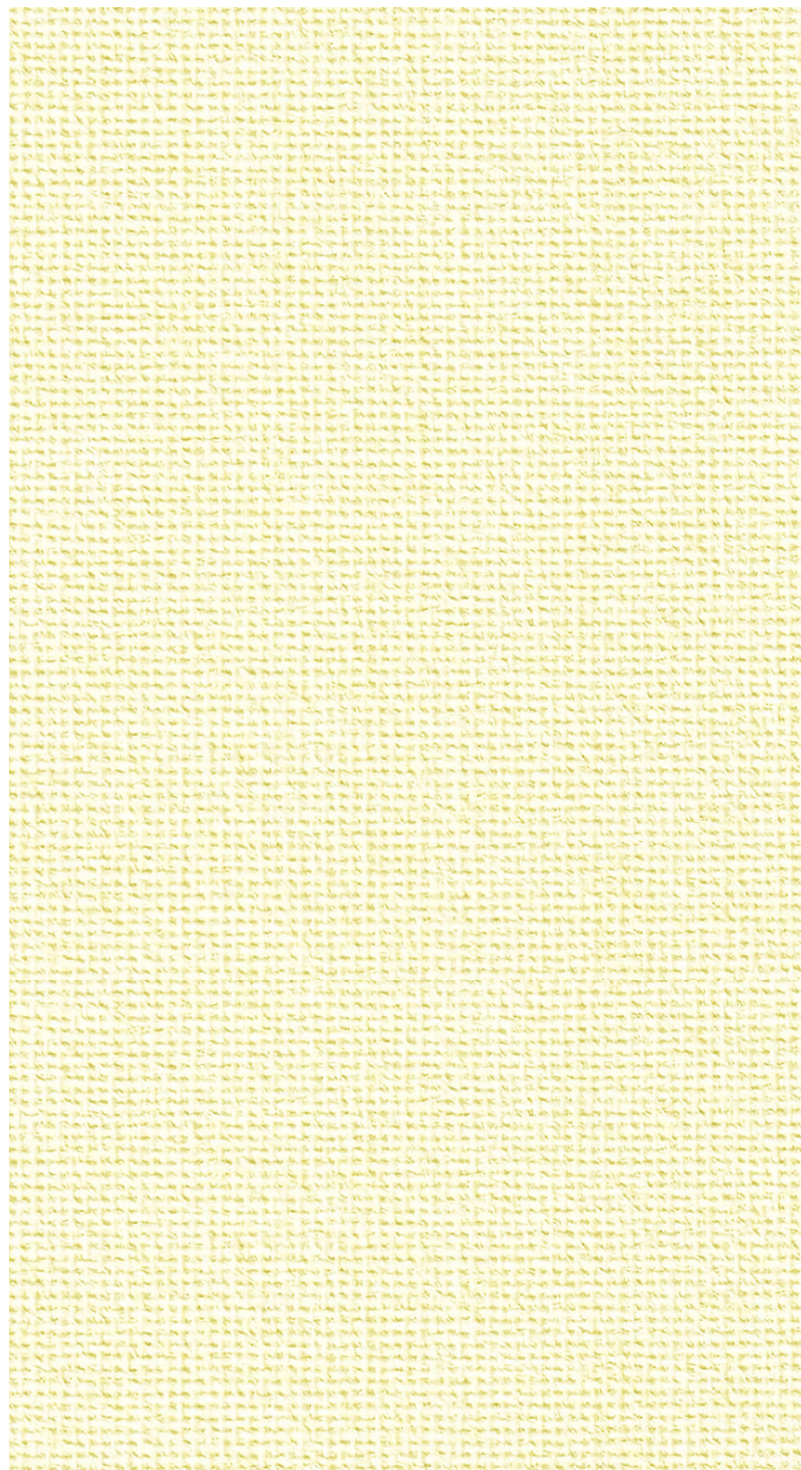
RO MA N
SH AD ES



PA NE L
TR AC KS



SK YLIGHT
TR AC KS



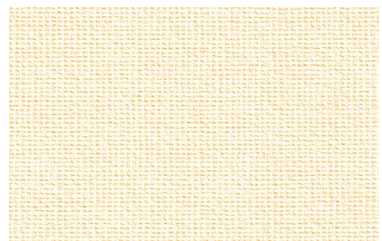
IVORY CREAM

6523



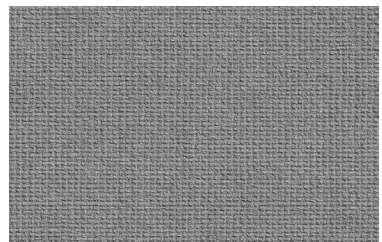
WHITE SNOW

6531



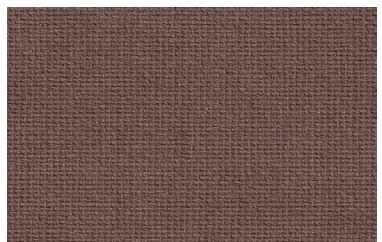
LIGHT SUNDEW

6532



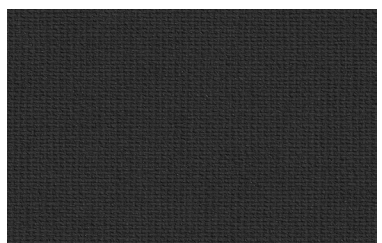
MYSTIC GRAY

6539



BROWN PENNY

6540



BLACKORE

6542

FABRICATION METHODS

Cutting: Cold Cut, Ultrasonic, Crush Cut or Laser

Seaming / Hemming: Thermal, High-Frequency, Ultrasonic or Sewing.

PRODUCT SPECIFICATIONS

COMPOSITION	100% Polyester
ROLL WIDTH	98"
ROLL LENGTH	33 yd
WEIGHT / YD ²	8.54 oz/ yd ²
THICKNESS	(L/F) .017" ± 5%
COLOR FASTNESS	4.5 (AATCC 16-2003)

CARE AND CLEANING

Remove dust with vacuum cleaner or compressed air. Do not scrub. Do not use solvents or any abrasive substance which might damage the coating on the fabric. Clean with a sponge or a soft brush dipped in soapy water using mild detergent. Rinse with clean water. Leave the shade down until completely dry. You can also rub the fabric very gently with a clean white pencil eraser to remove small stains.

CERTIFICATIONS, TESTS, AND WARRANTY

CALIFORNIA TITLE 19	OEKO-TEX® STANDARD 100	UL GREENGUARD GOLD	ROHS COMPLIANT	5 YEAR WARRANTY	ASTM G-21 & E-2180	NFPA® 701-TM
FLAME RETARDANT	FREE OF HARMFUL CHEMICALS	HEALTHY INDOOR AIR QUALITY	FREE OF HARMFUL METALS	QUALITY GUARANTEED	BACTERIA & FUNGAL RESISTANCE	FIRE RETARDANT