

SHADE
FABRIC
collection

GALAXY

BLACKOUT (B/O)
0% OPENNESS FACTOR
DECORATIVE



Your Solutions Weaver and Fabric Support Partner

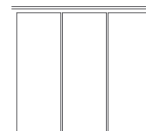
Galaxy has a traditional linen look, both elegant and natural, with a nostalgic structure and appearance adding to its character and beauty. Its subtle color palette with complete blackout properties provides a roller shade fabric perfect for boardrooms, media rooms, or bedrooms.



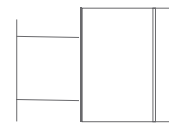
RO LLER
SH AD ES



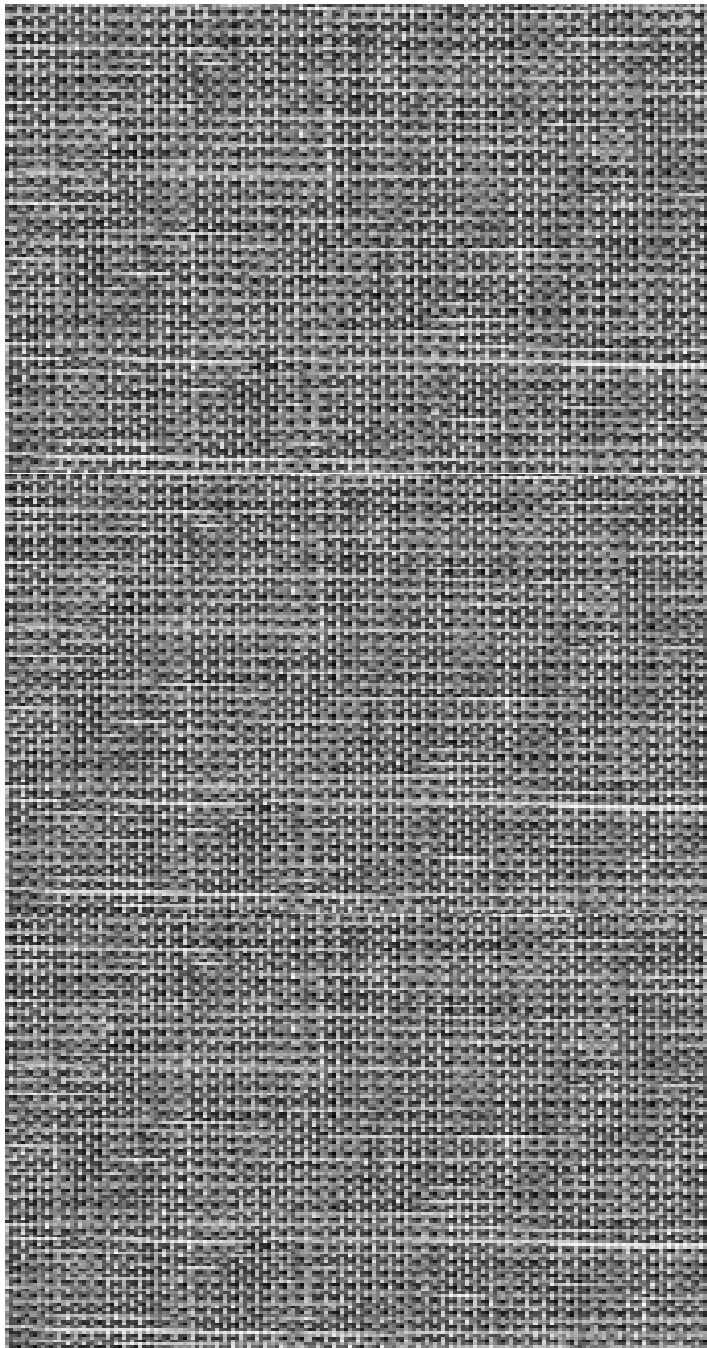
RO MA N
SH AD ES



PA NE L
TR AC KS

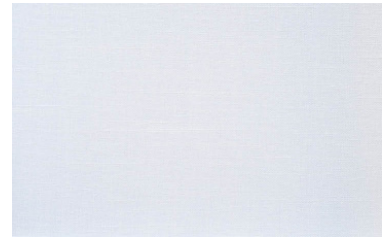


SK YLIGHT
TR AC KS



ECLIPSE

1904



NOVA

1900



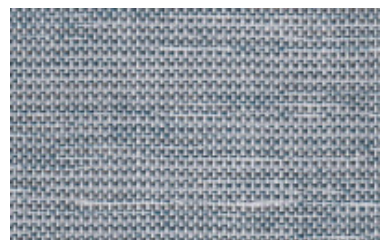
HALO

1901



JUNO

1902



ARIES

1903

FABRICATION METHODS

Cutting: Cold Cut, Ultrasonic, Crush Cut or Laser

Seaming / Hemming: Thermal, High-Frequency, Ultrasonic or Sewing.

PRODUCT SPECIFICATIONS

COMPOSITION	100% Polyester
ROLL WIDTH	118"
ROLL LENGTH	33 yd
WEIGHT / YD ²	12.61 oz/yd ²
THICKNESS	.029" ± 5%
COLOR FASTNESS	4.5 (AATCC 16-2003)

CARE AND CLEANING

Remove dust with vacuum cleaner or compressed air. Do not scrub. Do not use solvents or any abrasive substance which might damage the coating on the fabric. Clean with a sponge or a soft brush dipped in soapy water using mild detergent. Rinse with clean water. Leave the shade down until completely dry. You can also rub the fabric very gently with a clean white pencil eraser to remove small stains.

CERTIFICATIONS, TESTS, AND WARRANTY

CALIFORNIA TITLE 19 FLAME RETARDANT	OEKO-TEX® STANDARD 100 FREE OF HARMFUL CHEMICALS	UL GREENGUARD GOLD HEALTHY INDOOR AIR QUALITY	ROHS COMPLIANT FREE OF HARMFUL METALS	5 YEAR WARRANTY QUALITY GUARANTEED	ASTM G-21 & E-2180 BACTERIA & FUNGAL RESISTANCE	NFPA® 701-TM FIRE RETARDANT
---	---	--	--	---	--	---

YUMA®

www.yumausa.com