

SHADE
FABRIC
collection

MADRID

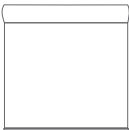
LIGHT-FILTERING (L/F)
<1% OPENNESS FACTOR

BLACKOUT (B/O)
0% OPENNESS FACTOR

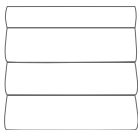


Your Solutions Weaver and Fabric Support Partner

Madrid's color palette was thoughtfully curated to honor the warm, contemporary ambiance often found in quaint book and coffee shops or even a rustic modern estate. Its weave pattern is as timeless as its color offering.



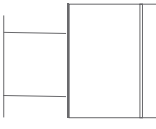
RO LLER
SH AD ES



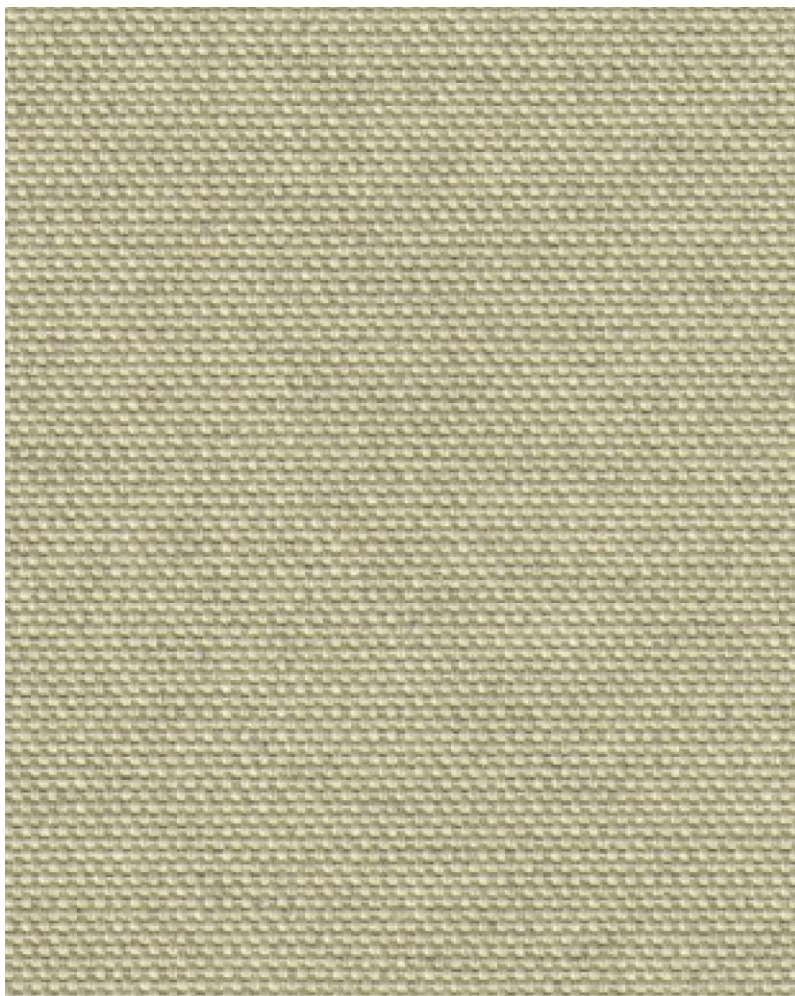
RO MA N
SH AD ES



PA NE L
TR AC KS

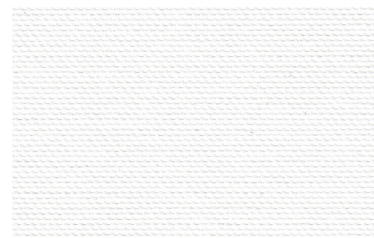


SK YLIGHT
TR AC KS



SWEET LATTE

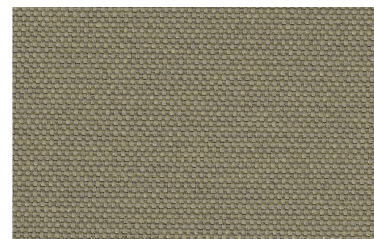
(B/O) 1903 (L/F) 1103



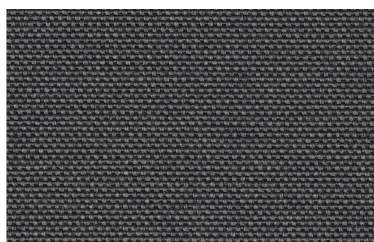
DOVE WHITE (B/O) 1901 (L/F) 1101



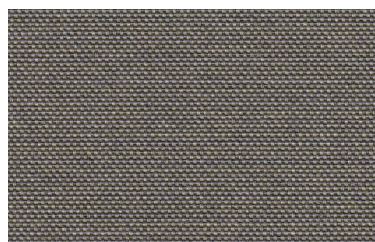
DRIED KHAKI (B/O) 1902 (L/F) 1102



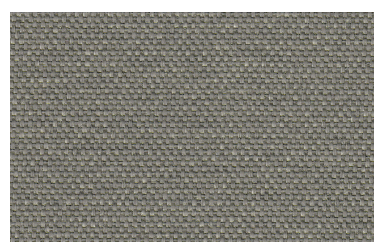
TAN WOOL (B/O) 1904 (L/F) 1104



LIGHT CHARCOAL (B/O)1906(L/F)1106



DARK CLOUD (B/O) 1907 (L/F) 1107



STEEL GRAY (B/O) 1905 (L/F) 1105

* (L/F) stands for light-filtering and (B/O) stands for blackout

FABRICATION METHODS

Cutting: Cold Cut, Ultrasonic, Crush Cut or Laser

Seaming / Hemming: Thermal, High-Frequency, Ultrasonic or Sewing.

PRODUCT SPECIFICATIONS

COMPOSITION	100% Polyester
ROLL WIDTH	118"
ROLL LENGTH	33 yd
WEIGHT / YD ²	(L/F) 8.47 oz/yd ² (B/O) 11.78 oz/ yd ²
THICKNESS	(L/F) .018" ± 5% (B/O) .024" ± 5%
COLOR FASTNESS	4.5 (AATCC 16-2003)

CARE AND CLEANING

Remove dust with vacuum cleaner or compressed air. Do not scrub. Do not use solvents or any abrasive substance which might damage the coating on the fabric. Clean with a sponge or a soft brush dipped in soapy water using mild detergent. Rinse with clean water. Leave the shade down until completely dry. You can also rub the fabric very gently with a clean white pencil eraser to remove small stains.

CERTIFICATIONS, TESTS, AND WARRANTY

CALIFORNIA TITLE 19	OEKO-TEX® STANDARD 100	UL GREENGUARD GOLD	ROHS COMPLIANT	5 YEAR WARRANTY	ASTM G-21 & E-2180	NFPA® 701-TM
FLAME RETARDANT	FREE OF HARMFUL CHEMICALS	HEALTHY INDOOR AIR QUALITY	FREE OF HARMFUL METALS	QUALITY GUARANTEED	BACTERIA & FUNGAL RESISTANCE	FIRE RETARDANT