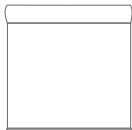


METIS

OPENNESS FACTOR 3%
SCREEN FABRIC



Metis features a classic mock-leno, fancy weave construction designed to maintain view-through ability and high-quality solar protection.



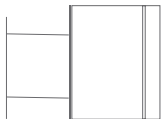
RO LLER
SH AD ES



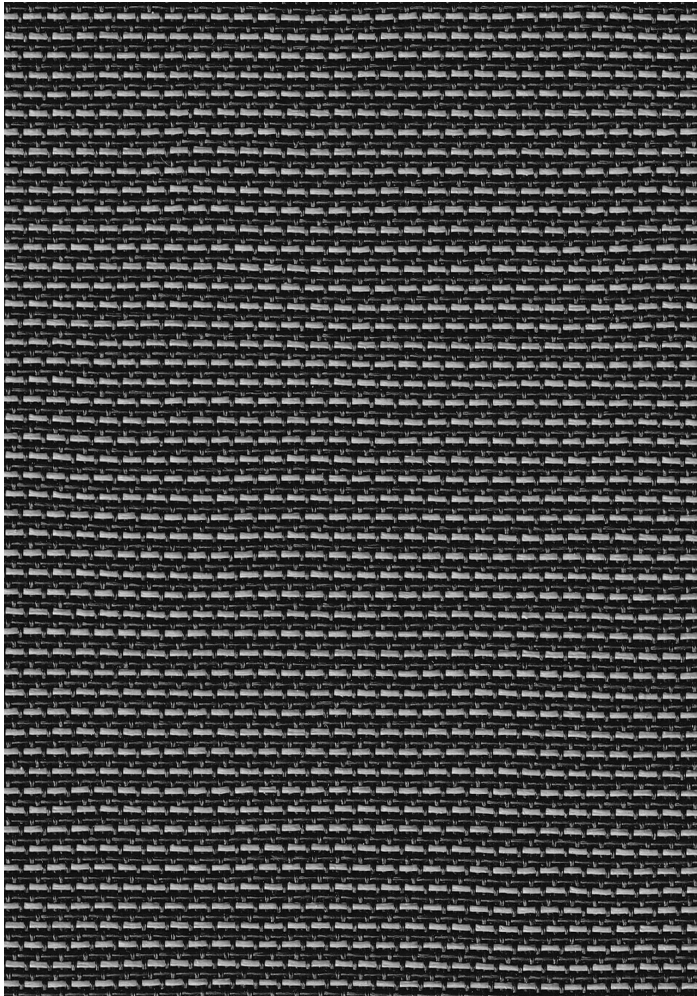
RO MA N
SH AD ES



PA NE L
TR AC KS

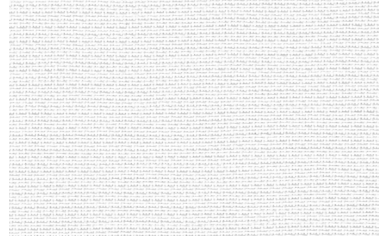


SK YLIGHT
TR AC KS



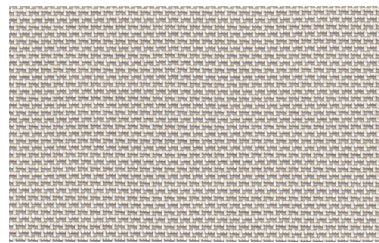
BLACK/GRAY

SC-P1-304



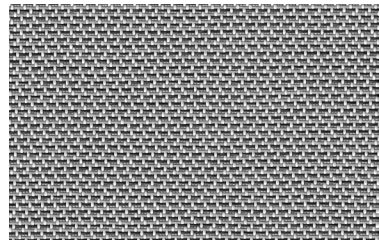
WHITE/WHITE

SC-P1-301



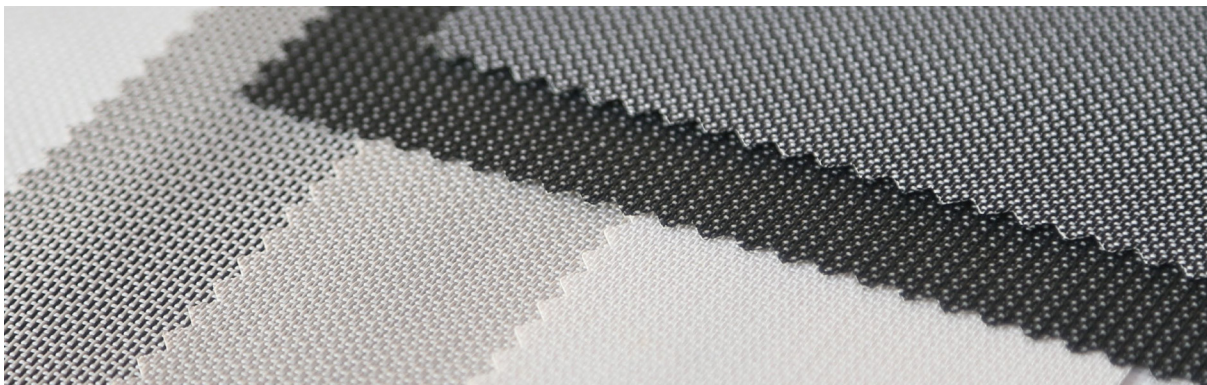
WHITE/LINEN

SC-P1-302



WHITE/GRAY

SC-P1-303



FABRICATION METHODS

Cutting: Cold Cut, Ultrasonic, Crush Cut or Laser

Seaming / Hemming: Thermal, High-Frequency, Ultrasonic or Sewing.

PRODUCT SPECIFICATIONS

| | |
|--------------------------|------------------------------------|
| COMPOSITION | 30% Polyester + 70% PVC |
| ROLL WIDTH | 118" |
| ROLL LENGTH | 33 yd |
| WEIGHT / YD ² | 11.93 oz/yd ² |
| THICKNESS | .024" ± 5% |
| COLOR FASTNESS | 8 Grade (SGS) |
| YARN COUNT | 48*42 |
| BREAKING STRENGTH | Warp 1600 N/5cm Weft 1370 N/5cm |

CARE AND CLEANING

Remove dust with vacuum cleaner or compressed air. Do not scrub. Do not use solvents or any abrasive substance which might damage the coating on the fabric. Clean with a sponge or a soft brush dipped in soapy water using mild detergent. Rinse with clean water. Leave the shade down until completely dry. You can also rub the fabric very gently with a clean white pencil eraser to remove small stains.

CERTIFICATIONS, TESTS, AND WARRANTY

| | | | | | | |
|--------------------------------|---------------------------------------|-----------------------------------|---------------------------|----------------------------|---------------------------------------|-------------------------|
| CALIFORNIA TITLE 19 | OEKO-TEX® STANDARD 100 | UL GREENGUARD GOLD | ROHS COMPLIANT | 5 YEAR WARRANTY | ASTM G-21 & E-2180 | NFPA® 701-TM |
| FLAME RETARDANT | FREE OF HARMFUL CHEMICALS | HEALTHY INDOOR AIR QUALITY | FREE OF HARMFUL METALS | QUALITY GUARANTEED | BACTERIA & FUNGAL RESISTANCE | FIRE RETARDANT |

YUMA®

www.yumausa.com