

SUN COOL
FABRICS

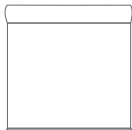
OMEGA 0%

BLACKOUT (B/O)
OPENNESS FACTOR 0%
SCREEN FABRIC

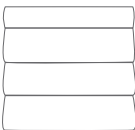


Your Solutions Weaver and Fabric Support Partner

Coordinate Omega blackout with regular Omega to accomplish your daylighting goals for specific interior applications. Omega blackout fabrics have a solid white backing for achieving the best solar control and design flexibility.



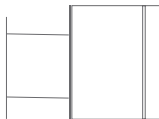
RO LLER
SH AD ES



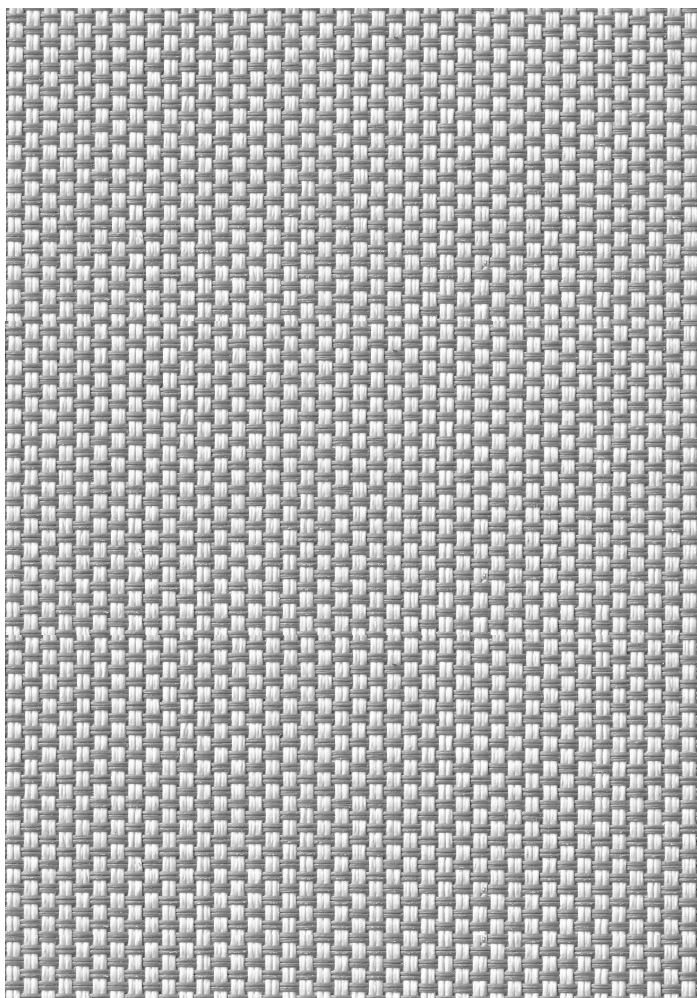
RO MA N
SH AD ES



PA NE L
TR AC KS



SK YLIGHT
TR AC KS



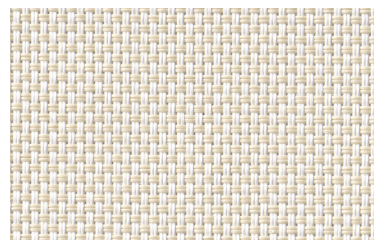
WHITE GRAY

SC-A9-503



WHITE/WHITE

SC-A9-501



WHITE/LINEN

SC-A9-502



FABRICATION METHODS

Cutting: Cold Cut, Ultrasonic, Crush Cut or Laser

Seaming / Hemming: Thermal, High-Frequency, Ultrasonic or Sewing.

PRODUCT SPECIFICATIONS

COMPOSITION	30% Polyester + 70% PVC
ROLL WIDTH	118"
ROLL LENGTH	33 yd
WEIGHT / YD ²	16.20 oz/yd ²
THICKNESS	.026" ± 5%
COLOR FASTNESS	8 Grade (SGS)
YARN COUNT	48*46
BREAKING STRENGTH	Warp 1420 N/5cm

CARE AND CLEANING

Remove dust with vacuum cleaner or compressed air. Do not scrub. Do not use solvents or any abrasive substance which might damage the coating on the fabric. Clean with a sponge or a soft brush dipped in soapy water using mild detergent. Rinse with clean water. Leave the shade down until completely dry. You can also rub the fabric very gently with a clean white pencil eraser to remove small stains.

CERTIFICATIONS, TESTS, AND WARRANTY

CALIFORNIA TITLE 19	OEKO-TEX® STANDARD 100	UL GREENGUARD GOLD	ROHS COMPLIANT	5 YEAR WARRANTY	ASTM G-21 & E-2180	NFPA® 701-TM
FLAME RETARDANT	FREE OF HARMFUL CHEMICALS	HEALTHY INDOOR AIR QUALITY	FREE OF HARMFUL METALS	QUALITY GUARANTEED	BACTERIA & FUNGAL RESISTANCE	FIRE RETARDANT

YUMA®

www.yumausa.com