

# SHANTUNG

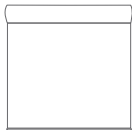
OPENNESS FACTOR 10%  
SCREEN FABRIC  
DECORATIVE



Your Solutions Weaver and Fabric Support Partner



The undulating weave pattern and soft colors of Shantung evoke a sense of elegance while creating depth, texture, and interest. Shantung is an excellent fabric for spaces where higher levels of natural light are desired.



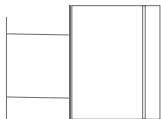
RO LLER  
SH AD ES



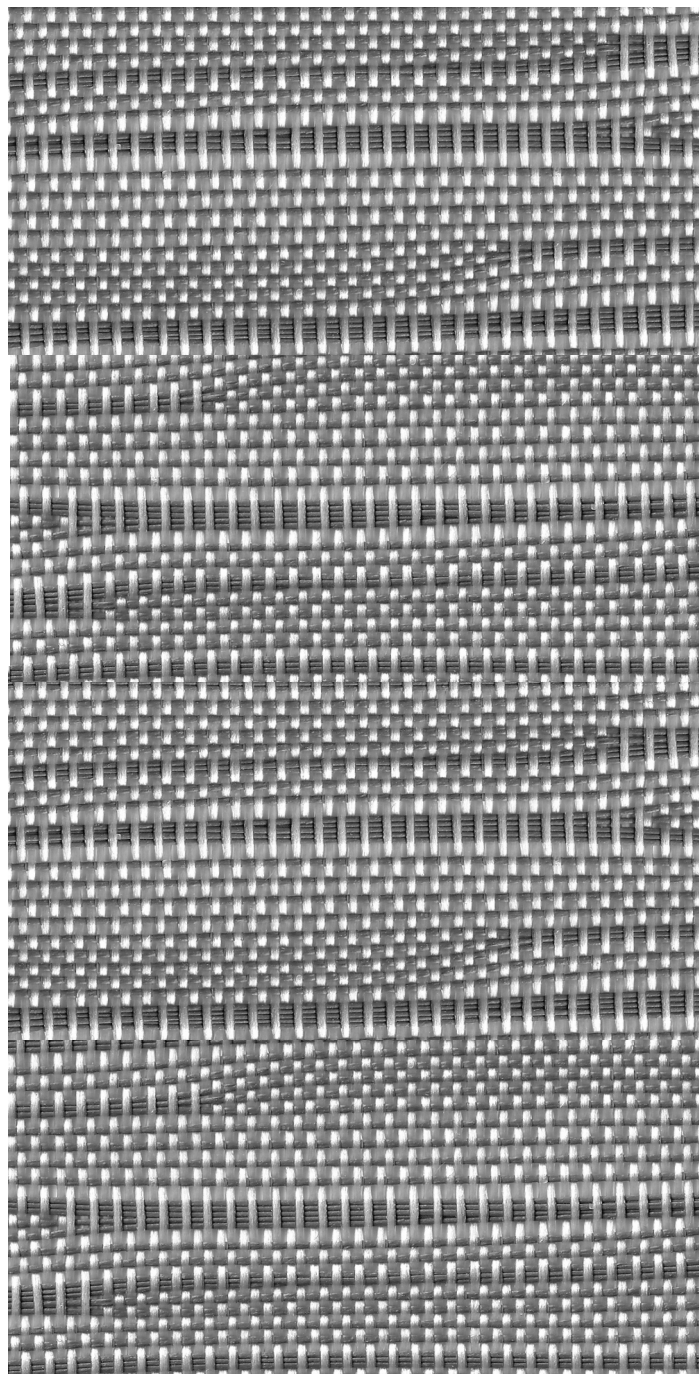
RO MA N  
SH AD ES



PA NE L  
TR AC KS

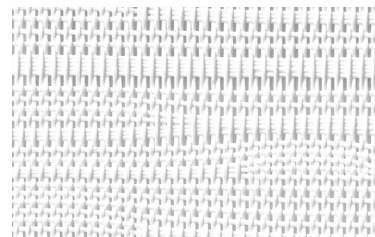


SK YLIGHT  
TR AC KS



DARK GRAY

SC-T7-1005



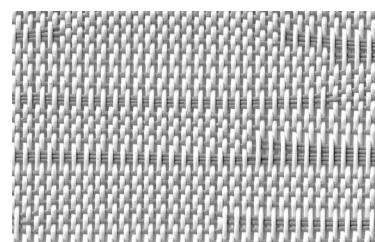
WHITE

SC-T7-1001



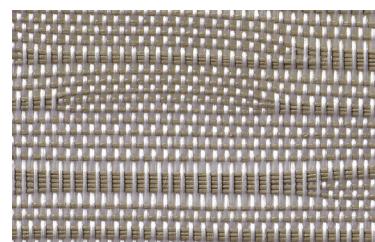
LINEN

SC-T7-1002



LIGHT GRAY

SC-T7-1003



BEIGE

SC-T7-1004



## FABRICATION METHODS

---

Cutting: Cold Cut, Ultrasonic, Crush Cut or Laser

Seaming / Hemming: Thermal, High-Frequency, Ultrasonic or Sewing.

## PRODUCT SPECIFICATIONS

---

COMPOSITION	30% Polyester + 70% PVC
ROLL WIDTH	118"
ROLL LENGTH	33 yd
WEIGHT / YD <sup>2</sup>	13.31 oz/yd <sup>2</sup>
THICKNESS	.041" ± 5%
COLOR FASTNESS	8 Grade (SGS)
YARN COUNT	38*26
BREAKING STRENGTH	Warp 2600 N/5cm Weft 2600 N/5cm

## CARE AND CLEANING

---

Remove dust with vacuum cleaner or compressed air. Do not scrub. Do not use solvents or any abrasive substance which might damage the coating on the fabric. Clean with a sponge or a soft brush dipped in soapy water using mild detergent. Rinse with clean water. Leave the shade down until completely dry. You can also rub the fabric very gently with a clean white pencil eraser to remove small stains.

## CERTIFICATIONS, TESTS, AND WARRANTY

---

<b>CALIFORNIA TITLE 19</b>	<b>OEKO-TEX® STANDARD 100</b>	<b>UL GREENGUARD GOLD</b>	<b>ROHS COMPLIANT</b>	<b>5 YEAR WARRANTY</b>	<b>ASTM G-21 &amp; E-2180</b>	<b>NFPA® 701-TM</b>
FLAME RETARDANT	FREE OF HARMFUL CHEMICALS	HEALTHY INDOOR AIR QUALITY	FREE OF HARMFUL METALS	QUALITY GUARANTEED	BACTERIA & FUNGAL RESISTANCE	FIRE RETARDANT

**YUMA®**

[www.yumausa.com](http://www.yumausa.com)