

SHADE  
FABRIC  
collection

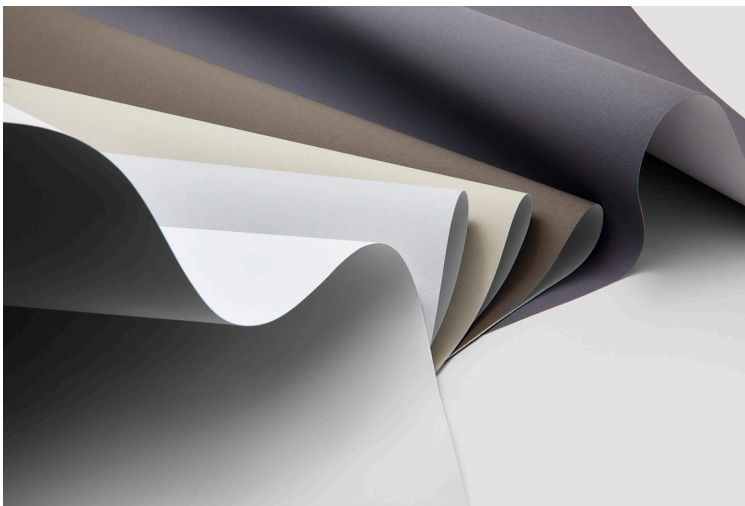
# STATIC

BLACKOUT (B/O)  
0% OPENNESS FACTOR

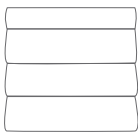


Your Solutions Weaver and Fabric Support Partner

A fabric style for the traditionalist at heart, Static offers splashes of neutrals such as white, gray, and tan. All fabric colors feature a solid white backing great for enhanced solar performance.



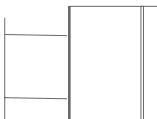
RO LLER  
SH AD ES



RO MA N  
SH AD ES

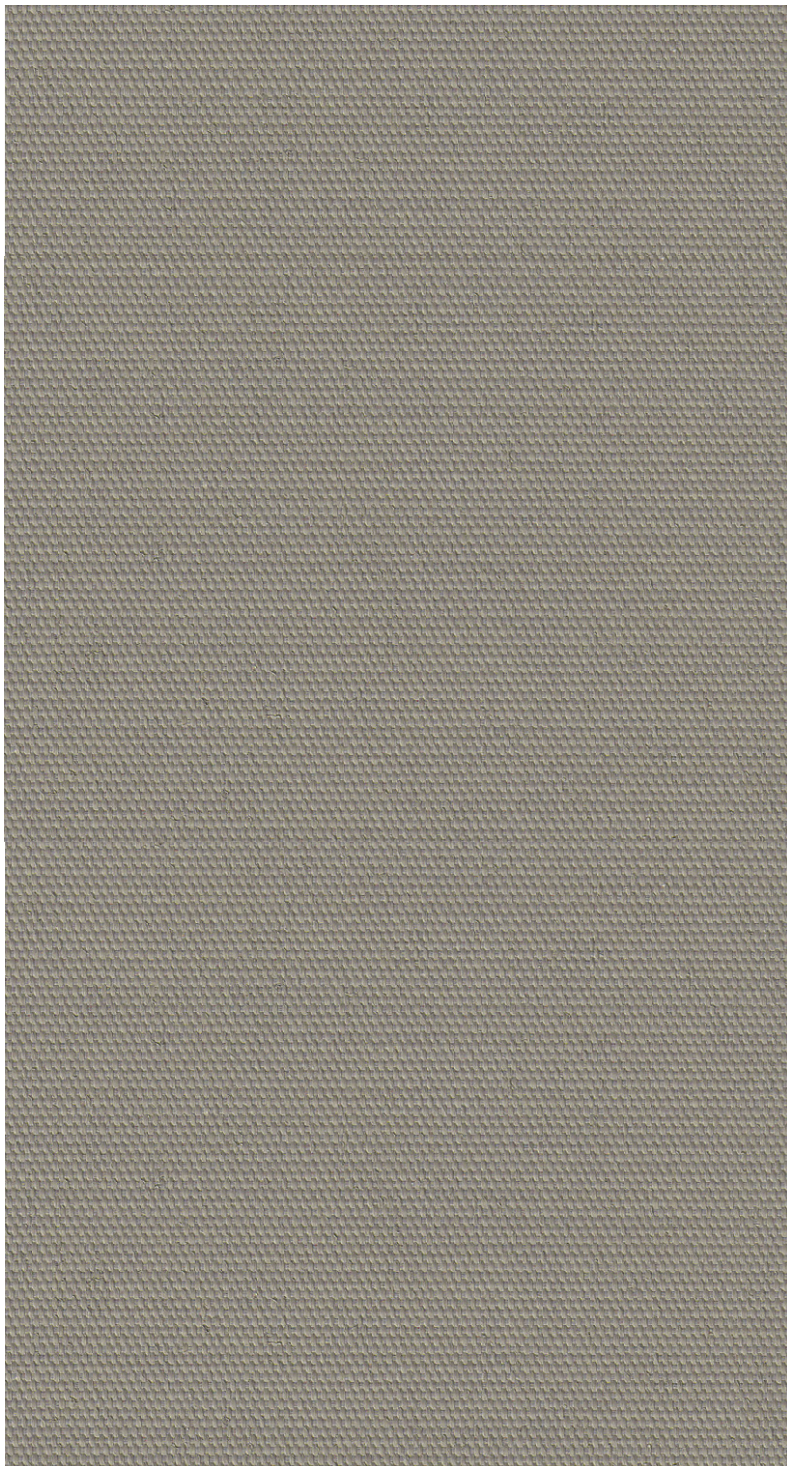


PA NE L  
TR AC KS



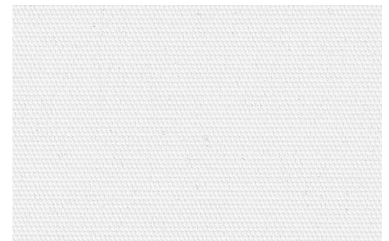
SK YLIGHT  
TR AC KS





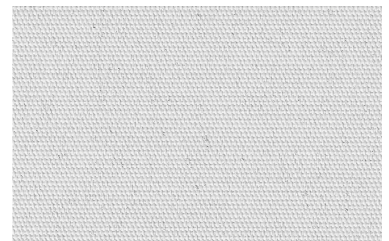
COFFEE

1906



SOFT WHITE

1901



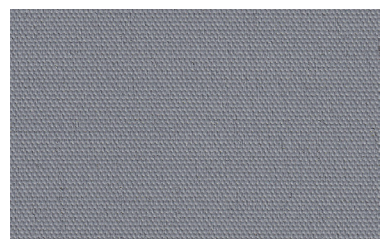
EARTH

1903



BEIGE

1904



GRAY

1905

## FABRICATION METHODS

---

Cutting: Cold Cut, Ultrasonic, Crush Cut or Laser

Seaming / Hemming: Thermal, High-Frequency, Ultrasonic or Sewing.

## PRODUCT SPECIFICATIONS

---

COMPOSITION	100% Polyester
ROLL WIDTH	118"
ROLL LENGTH	33 yd
WEIGHT / YD <sup>2</sup>	10.90 oz/ yd <sup>2</sup>
THICKNESS	.020" ± 5%
COLOR FASTNESS	4.5 (AATCC 16-2003)

## CARE AND CLEANING

---

Remove dust with vacuum cleaner or compressed air. Do not scrub. Do not use solvents or any abrasive substance which might damage the coating on the fabric. Clean with a sponge or a soft brush dipped in soapy water using mild detergent. Rinse with clean water. Leave the shade down until completely dry. You can also rub the fabric very gently with a clean white pencil eraser to remove small stains.

## CERTIFICATIONS, TESTS, AND WARRANTY

---

<b>CALIFORNIA TITLE 19</b>	<b>OEKO-TEX® STANDARD 100</b>	<b>UL GREENGUARD GOLD</b>	<b>ROHS COMPLIANT</b>	<b>5 YEAR WARRANTY</b>	<b>ASTM G-21 &amp; E-2180</b>	<b>NFPA® 701-TM</b>
FLAME RETARDANT	FREE OF HARMFUL CHEMICALS	HEALTHY INDOOR AIR QUALITY	FREE OF HARMFUL METALS	QUALITY GUARANTEED	BACTERIA & FUNGAL RESISTANCE	FIRE RETARDANT