

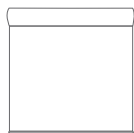
# BROMUS

OPENNESS FACTOR 5%  
SCREEN FABRIC  
DECORATIVE

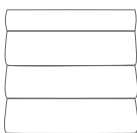




Bromus features multi-colored yarns of linens, grays, and browns to provide the appearance of texture within a beautiful, natural-looking fabric.



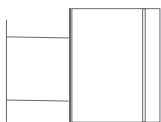
ROLLER  
SHADES



ROMAN  
SHADES



PANEL  
TRACKS



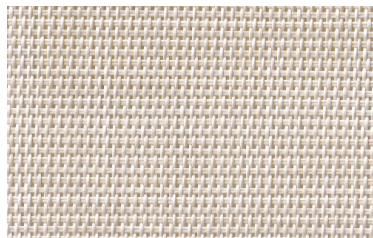
SKYLIGHT  
TRACKS





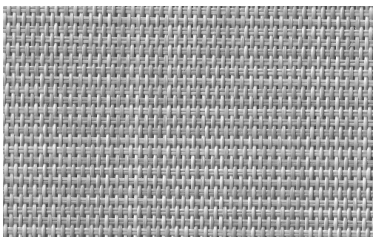
DARK BROWN

SC-L1-507



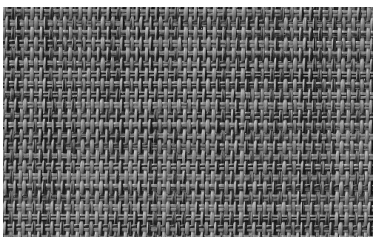
BEIGE

SC-L1-501



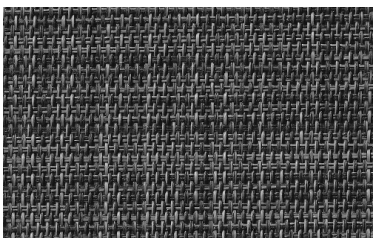
LIGHT GRAY

SC-L1-502



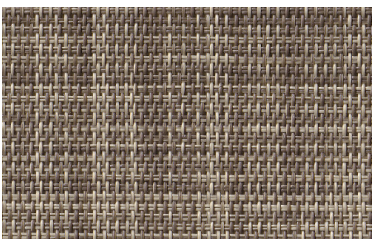
DARK GRAY

SC-L1-503



BLACK

SC-L1-504



BROWN

SC-L1-507

## FABRICATION METHODS

---

Cutting: Cold Cut, Ultrasonic, Crush Cut or Laser

Seaming / Hemming: Thermal, High-Frequency, Ultrasonic or Sewing.

## PRODUCT SPECIFICATIONS

---

COMPOSITION	30% Polyester + 70% PVC
ROLL WIDTH	118"
ROLL LENGTH	33 yd
WEIGHT / YD <sup>2</sup>	12.61 oz/yd <sup>2</sup>
THICKNESS	.029" ± 5%
COLOR FASTNESS	8 Grade (SGS)
YARN COUNT	48*46
BREAKING STRENGTH	Warp 1600 N/5cm Weft 1500 N/5cm

## CARE AND CLEANING

---

Remove dust with vacuum cleaner or compressed air. Do not scrub. Do not use solvents or any abrasive substance which might damage the coating on the fabric. Clean with a sponge or a soft brush dipped in soapy water using mild detergent. Rinse with clean water. Leave the shade down until completely dry. You can also rub the fabric very gently with a clean white pencil eraser to remove small stains.

## CERTIFICATIONS, TESTS, AND WARRANTY

---

<b>CALIFORNIA TITLE 19</b>	<b>OEKO-TEX® STANDARD 100</b>	<b>UL GREENGUARD GOLD</b>	<b>ROHS COMPLIANT</b>	<b>10 YEAR WARRANTY</b>	<b>ASTM G-21 &amp; E-2180</b>	<b>NFPA® 701-TM</b>
FLAME RETARDANT	FREE OF HARMFUL CHEMICALS	HEALTHY INDOOR AIR QUALITY	FREE OF HARMFUL METALS	QUALITY GUARANTEED	BACTERIA & FUNGAL RESISTANCE	FIRE RETARDANT