

SHADE
FABRIC
collection

GENEVA

LIGHT-FILTERING (L/F)
<1% OPENNESS FACTOR

BLACKOUT (B/O)
0% OPENNESS FACTOR

DECORATIVE

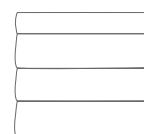


Your Solutions Weaver and Fabric Support Partner

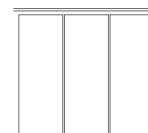
Geneva is an organic styled fabric resembling that of bark, reminiscent of woodland trees and Scottish tweed. It provides a dynamic pattern that is classic, dimensional, and soft to the eyes. The light-filtering style option of Geneva provides beautiful natural daylighting combined with privacy. The blackout style features a white foam backing great for residential applications.



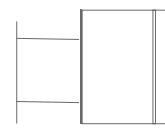
RO LLER
SH AD ES



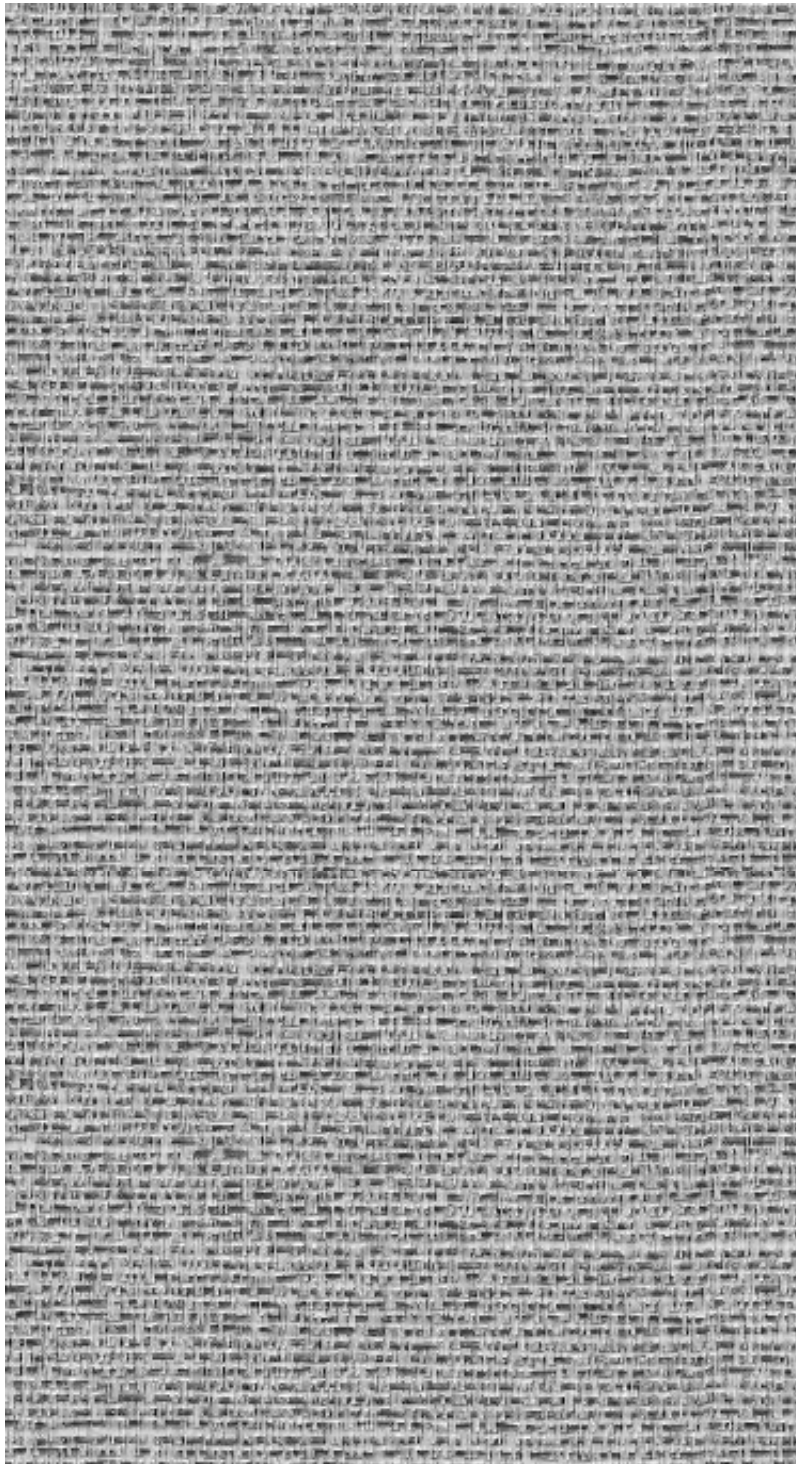
RO MA N
SH AD ES



PA NE L
TR AC KS



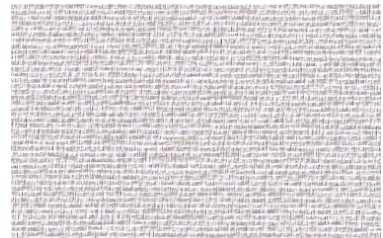
SK YLIGHT
TR AC KS



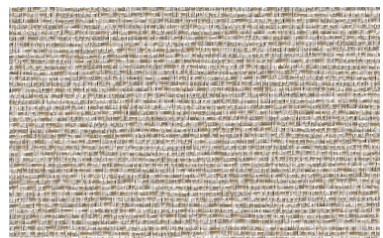
SNOW (L/F) 1101 (B/O) 1901



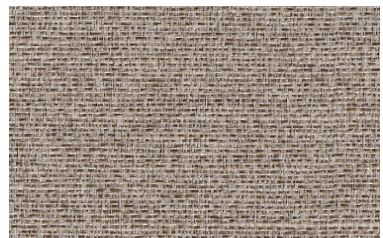
IVORY (L/F) 1102 (B/O) 1902



OFF WHITE (L/F) 1103 (B/O) 1903



STONE (L/F) 1104 (B/O) 1904



SILVER

(L/F) 1106 (B/O) 1906

COFFEE

(L/F) 1105 (B/O) 1905

* (L/F) stands for light-filtering and (B/O) stands for blackout.

FABRICATION METHODS

Cutting: Cold Cut, Ultrasonic, Crush Cut or Laser

Seaming / Hemming: Thermal, High-Frequency, Ultrasonic or Sewing.

PRODUCT SPECIFICATIONS

COMPOSITION	100% Polyester
ROLL WIDTH	118"
ROLL LENGTH	33 yd
WEIGHT / YD ²	(L/F) 5.30 oz/yd ² (B/O) 10.90 oz/ yd ²
THICKNESS	(L/F) .022" ± 5% (B/O) .025" ± 5%
COLOR FASTNESS	4.5 (AATCC 16-2003)

CARE AND CLEANING

Remove dust with vacuum cleaner or compressed air. Do not scrub. Do not use solvents or any abrasive substance which might damage the coating on the fabric. Clean with a sponge or a soft brush dipped in soapy water using mild detergent. Rinse with clean water. Leave the shade down until completely dry. You can also rub the fabric very gently with a clean white pencil eraser to remove small stains.

CERTIFICATIONS, TESTS, AND WARRANTY

CALIFORNIA
TITLE 19

FLAME RETARDANT

OEKO-TEX®
STANDARD
100

FREE OF HARMFUL
CHEMICALS

UL
GREENGUARD
GOLD

HEALTHY INDOOR
AIR QUALITY

ROHS
COMPLIANT

FREE OF HARMFUL
METALS

10 YEAR
WARRANTY

QUALITY
GUARANTEED

ASTM
G-21 &
E-2180

BACTERIA &
FUNGAL RESISTANCE

YUMA®

www.yumausa.com