

SHADE
FABRIC
collection

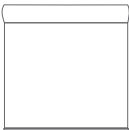
MONTICELLO

BLACKOUT (B/O)
0% OPENNESS FACTOR
DECORATIVE

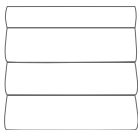


Your Solutions Weaver and Fabric Support Partner

Monticello reveals the power of subtle shifts in color when overlapping woven yarns in various horizontal and vertical locations. This results in a richly patterned surface and shade fabric designed to give you complete light control, variety, and style.



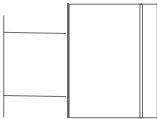
RO LLER
SH AD ES



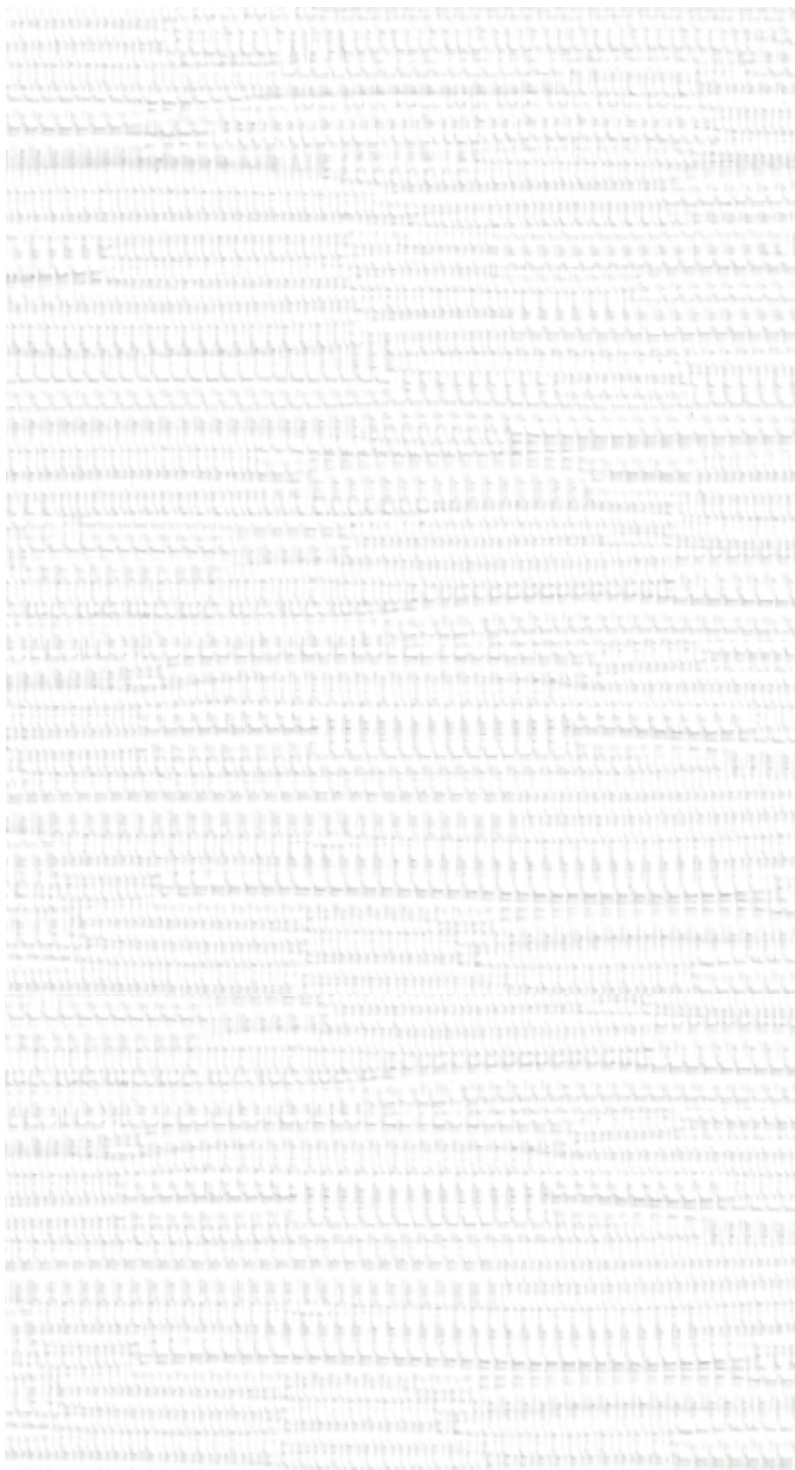
RO MA N
SH AD ES



PA NE L
TR AC KS



SK YLIGHT
TR AC KS



BRIGHT WHITE

1901



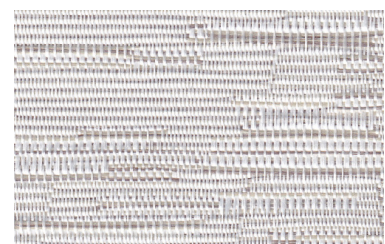
LIGHT EGGSHELL

1901



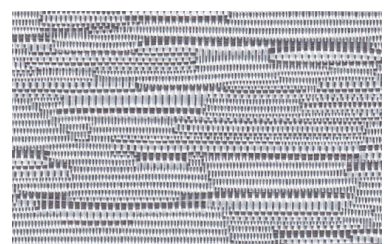
VANILLA SHAKE

1903



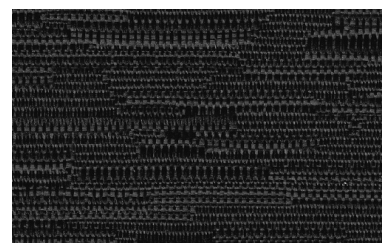
LIGHT MOCA

1904



GRAY SHADOW

1905



TRUE BLACK

1906

FABRICATION METHODS

Cutting: Cold Cut, Ultrasonic, Crush Cut or Laser

Seaming / Hemming: Thermal, High-Frequency, Ultrasonic or Sewing.

PRODUCT SPECIFICATIONS

COMPOSITION	100% Polyester
ROLL WIDTH	98"
ROLL LENGTH	33 yd
WEIGHT / YD ²	10.90 oz/ yd ²
THICKNESS	.026" ± 5%
COLOR FASTNESS	4.5 (AATCC 16-2003)

CARE AND CLEANING

Remove dust with vacuum cleaner or compressed air. Do not scrub. Do not use solvents or any abrasive substance which might damage the coating on the fabric. Clean with a sponge or a soft brush dipped in soapy water using mild detergent. Rinse with clean water. Leave the shade down until completely dry. You can also rub the fabric very gently with a clean white pencil eraser to remove small stains.

CERTIFICATIONS, TESTS, AND WARRANTY

CALIFORNIA TITLE 19	OEKO-TEX® STANDARD 100	UL GREENGUARD GOLD	ROHS COMPLIANT	10 YEAR WARRANTY	ASTM G-21 & E-2180
FLAME RETARDANT	FREE OF HARMFUL CHEMICALS	HEALTHY INDOOR AIR QUALITY	FREE OF HARMFUL METALS	QUALITY GUARANTEED	BACTERIA & FUNGAL RESISTANCE