

SHADE
FABRIC
collection

SILK BAMBOO

LIGHT-FILTERING (L/F)
<1% OPENNESS FACTOR

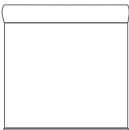
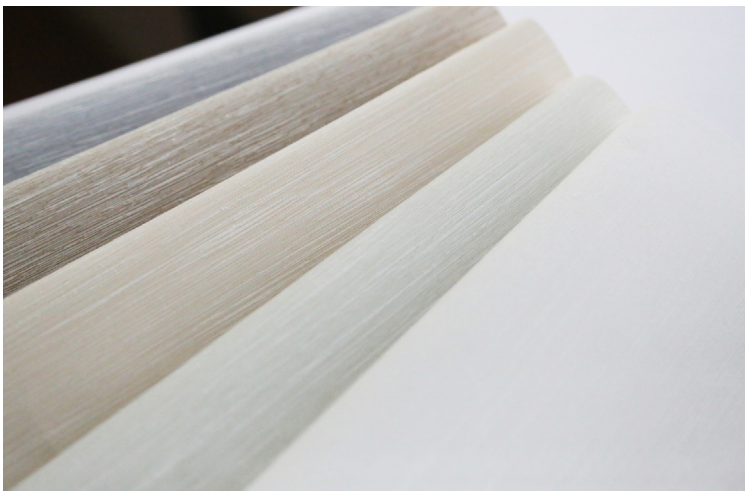
BLACKOUT (B/O)
0% OPENNESS FACTOR

DECORATIVE

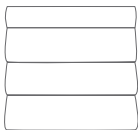


Your Solutions Weaver and Fabric Support Partner

Silk Bamboo's subtly textured surface introduces depth and dimension to any room. Choose from complete privacy with the solid white backing on the blackout collection or semi-privacy and subtle light transmittance with the color-coordinated light-filtering collection. Both styles perform exceptionally well by blocking high levels of heat and light from entering the room.



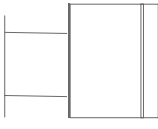
RO LLER
SH AD ES



RO MA N
SH AD ES



PA NE L
TR AC KS



SK YLIGHT
TR AC KS



BROWN STONE (B/O) 5304 (L/F) 5314



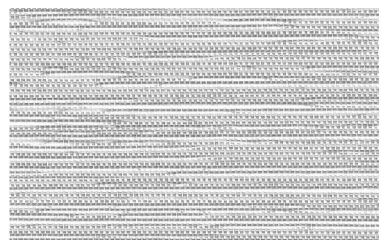
BRIGHT LIGHT (B/O) 5301 (L/F) 5311



TUMBLEWEED (B/O) 5302 (L/F) 5312



SAND (B/O) 5303 (L/F) 5313



STEEL (B/O) 5305 (L/F) 5315

* (L/F) stands for light-filtering (B/O) stands for blackout

FABRICATION METHODS

Cutting: Cold Cut, Ultrasonic, Crush Cut or Laser

Seaming / Hemming: Thermal, High-Frequency, Ultrasonic or Sewing.

PRODUCT SPECIFICATIONS

COMPOSITION	100% Polyester
ROLL WIDTH	102"
ROLL LENGTH	33 yd
WEIGHT / YD ²	(L/F) 6.53 oz/yd ² (B/O) 10.60 oz/ yd ²
THICKNESS	(L/F) .014" ± 5% (B/O) .022" ± 5%
COLOR FASTNESS	4.5 (AATCC 16-2003)

CARE AND CLEANING

Remove dust with vacuum cleaner or compressed air. Do not scrub. Do not use solvents or any abrasive substance which might damage the coating on the fabric. Clean with a sponge or a soft brush dipped in soapy water using mild detergent. Rinse with clean water. Leave the shade down until completely dry. You can also rub the fabric very gently with a clean white pencil eraser to remove small stains.

CERTIFICATIONS, TESTS, AND WARRANTY

CALIFORNIA
TITLE 19

FLAME RETARDANT

OEKO-TEX®
STANDARD
100

FREE OF HARMFUL
CHEMICALS

UL
GREENGUARD
GOLD

HEALTHY INDOOR
AIR QUALITY

ROHS
COMPLIANT

FREE OF HARMFUL
METALS

10 YEAR
WARRANTY

QUALITY
GUARANTEED

ASTM
G-21 &
E-2180

BACTERIA &
FUNGAL RESISTANCE

YUMA®

www.yumausa.com