

ZEBRA
SHADE
collection

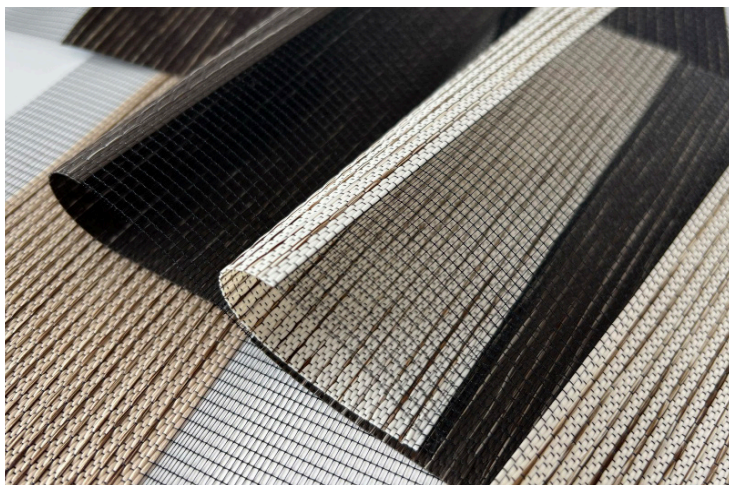
FLORENCE

LIGHT-FILTERING (L/F)
ZEBRA SHADE COLLECTION



Your Solutions Weaver and Fabric Support Partner

A beautiful texture in a bold woven tweed palette, the Florence Zebra shade collection offers warm color options to energize any room.



RO LLER
SH AD ES

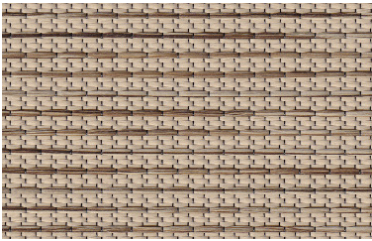


RO MA N
SH AD ES



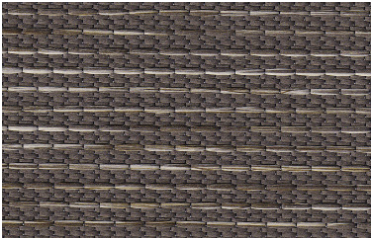
CARDAMOM

B1501



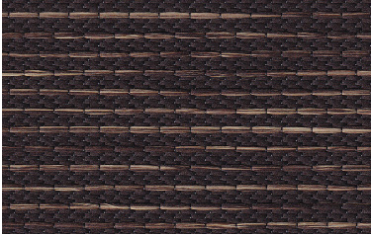
NUTMEG

B1502



CACAO

B1503



PEPPERCORN

B1504

FABRICATION METHODS

Cutting: Cold Cut, Ultrasonic, Crush Cut or Laser

Seaming / Hemming: Thermal, High-Frequency, Ultrasonic or Sewing.

PRODUCT SPECIFICATIONS

COMPOSITION	100% Polyester
ROLL WIDTH	118"
ROLL LENGTH	54.7 yd
WEIGHT / YD ²	5.21 oz/yd ² ± 5%
SHEER & SOLID REPEAT	2.95" / 1.97"

CARE AND CLEANING

Utilize a light feather duster or hairdryer to dust the outside face of the fabric. For thorough cleaning, the use of a small vacuum with a bristle brush will work but show extreme care in making sure not to allow the fabric to enter the vacuum. Use a sponge or a soft cloth dipped in warm water with a light detergent in case of light stains. To avoid leaving a mark, wipe from the periphery of the stain and blend in the cleaning solution. The fabrics cannot be scrubbed with any hard or abrasive objects. Be sure to remove any particulates on the fabrics' surface. Regular brush vacuuming will keep your fabrics looking new and fresh. When cleaning windows around the fabrics, be sure to roll the fabric completely up to allow access to the objects you are cleaning and to minimize any harsh chemicals from coming in contact with the fabrics. Should you discover any threads or frayed edges, do not tear or pull them. Use scissors to cut away any threads gently.

CERTIFICATIONS, TESTS, AND WARRANTY

OEKO-TEX®
STANDARD
100

FREE OF HARMFUL
CHEMICALS

UL
GREENGUARD
GOLD

HEALTHY INDOOR
AIR QUALITY

ROHS
COMPLIANT

FREE OF HARMFUL
METALS

5 YEAR
WARRANTY

QUALITY
GUARANTEED

ASTM
G-21 &
E-2180

BACTERIA &
FUNGAL RESISTANCE

YUMA®

www.yumausa.com