

SUN COOL
FABRICS

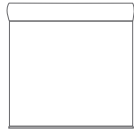
CYPRUS

Openness Factor 5%
Screen Fabric
SunCool Collection

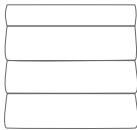


Your Solutions Weaver and Fabric Support Partner

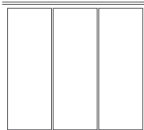
Beautifully textured, the patented yarn structure of Cyprus is made by a special drawing and wrapping process, which adjusts the evenness of the fabric's yarn. This process results in irregular yarn thickness throughout the material and creates a natural slub texture similar to papyrus or bamboo grain. The Cyprus color line is also beautifully curated to match many elemental, organic tones in the wilderness, making it easily integrable with most interior spaces.



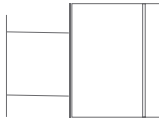
ROLLER
SHADES



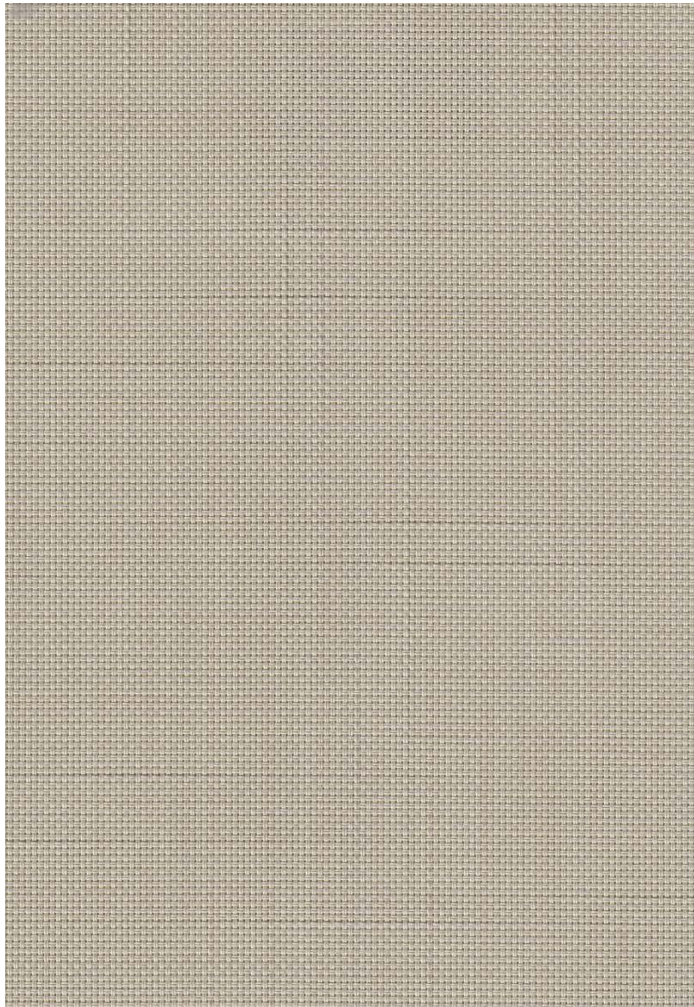
ROMAN
SHADES



PANEL
TRACKS

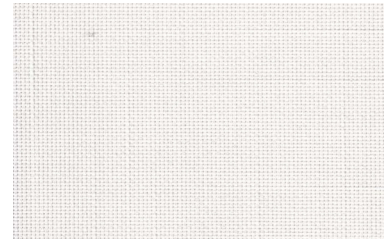


SKYLIGHT
TRACKS



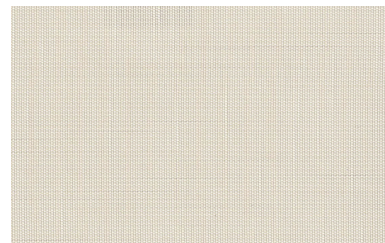
LIGHT BROWN

SC-S6-504



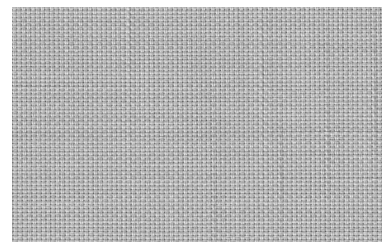
CLOUD WHITE

SC-S6-501



WHITE LINEN

SC-S6-502



LIGHT GRAY

SC-S6-503



FABRICATION METHODS

Cutting: Cold Cut, Ultrasonic, Crush Cut or Laser

Seaming / Hemming: Thermal, High-Frequency, Ultrasonic or Sewing.

PRODUCT SPECIFICATIONS

COMPOSITION	20% Polyester + 80% PVC
ROLL WIDTH	118"
ROLL LENGTH	33 yd
WEIGHT / YD ²	12.44 oz/yd ² ± 5%
THICKNESS	.028" ± 5%
COLOR FASTNESS	8 Grade (SGS)
YARN COUNT	48*46
BREAKING STRENGTH	Warp 1432 N/5cm Weft 1422 N/5cm

CARE AND CLEANING

Remove dust with vacuum cleaner or compressed air. Do not scrub. Do not use solvents or any abrasive substance which might damage the coating on the fabric. Clean with a sponge or a soft brush dipped in soapy water using mild detergent. Rinse with clean water. Leave the shade down until completely dry. You can also rub the fabric very gently with a clean white pencil eraser to remove small stains.

CERTIFICATIONS, TESTS, AND WARRANTY

**CALIFORNIA
TITLE 19**

FLAME RETARDANT

**OEKO-TEX®
STANDARD
100**

FREE OF HARMFUL
CHEMICALS

**UL
GREENGUARD
GOLD**

HEALTHY INDOOR
AIR QUALITY

**ROHS
COMPLIANT**

FREE OF HARMFUL
METALS

**10YEAR
WARRANTY**

QUALITY
GUARANTEED

**ASTM
G-21 &
E-2180**

BACTERIA &
FUNGAL RESISTANCE

**NFPA®
701-TM**

FIRE RETARDANT