

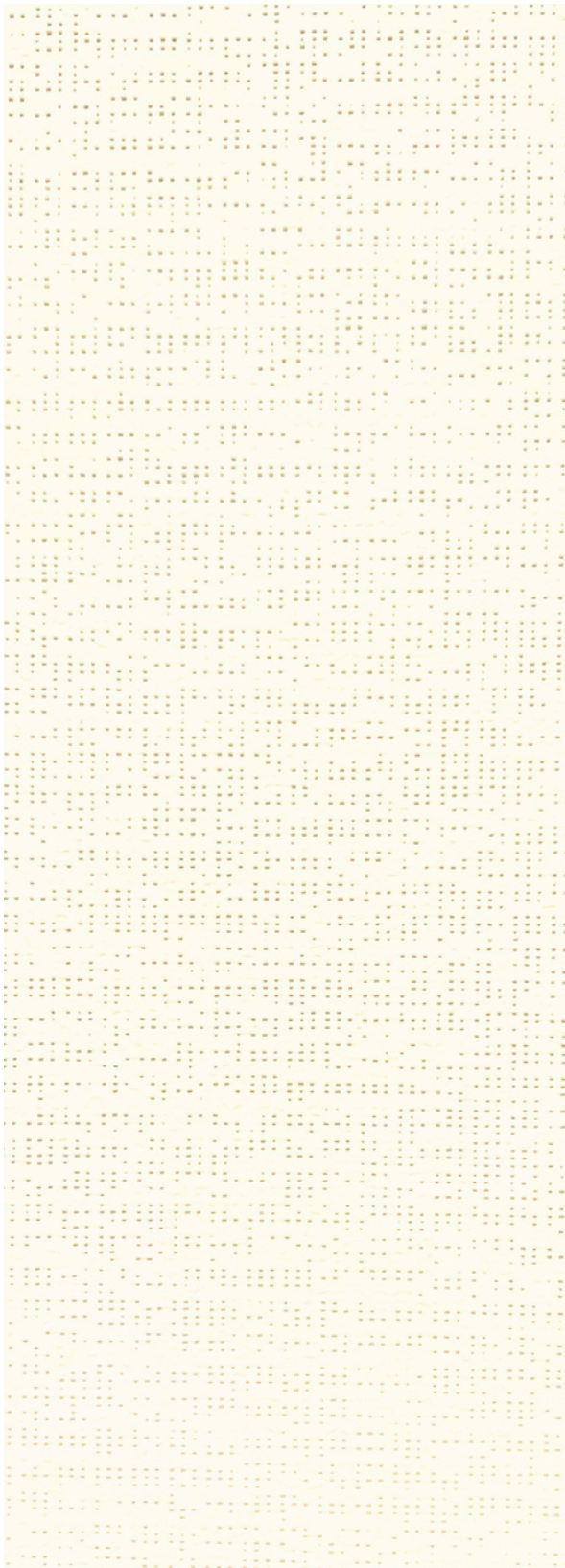
PROSHEILD SHADE

Openness Factor 4%
Screen Fabric

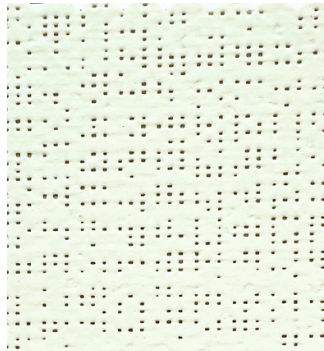


Engineered to withstand the harshest climates, Prosheid Shade fabrics offer exceptional resistance to the sun's harmful rays, heat, and other environmental elements. With their high-tensile strength and ultra-low shrinkage, they maintain their shape, durability, and integrity over time, ensuring they continue to provide maximum protection and comfort.

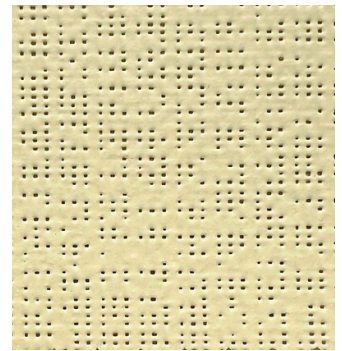




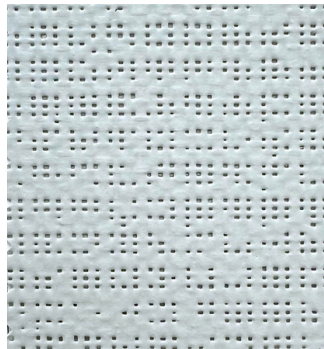
WHITE TSL-MY-401



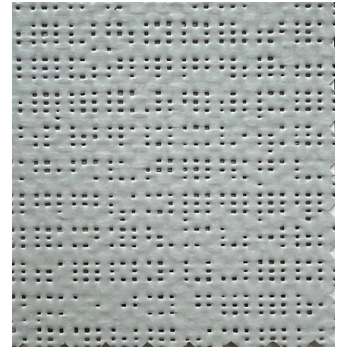
LINEN TSL-MY-402



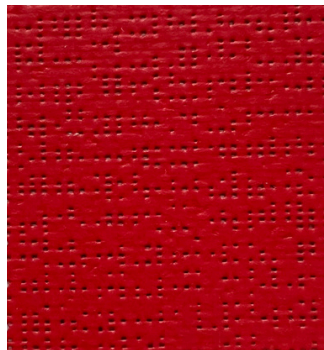
TAUPE TSL-MY-402



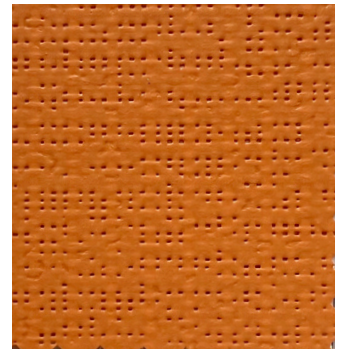
LIGHT GRAY TSL-MY-404



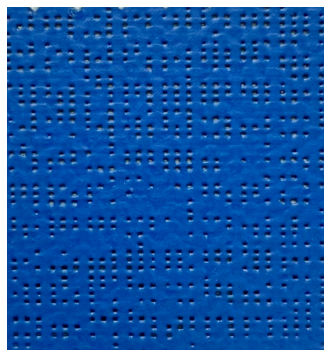
DARK GRAY TSL-MY-405



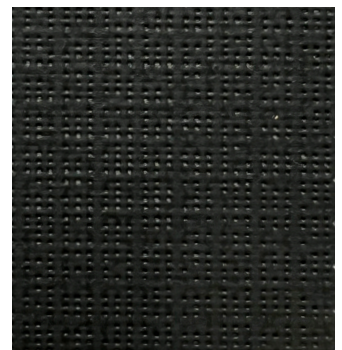
RED TSL-MY-407



CLEMENTINE TSL-MY-406



BLUE SKY TSL-MY-408



CHARCOAL TSL-MY-409

FABRICATION METHODS

Cutting: Cold Cut, Ultrasonic, Crush Cut, or Laser

Seaming / Hemming: Thermal, High-Frequency, Ultrasonic or Sewing.

PRODUCT SPECIFICATIONS

COMPOSITION	30% Polyester + 70% PVC
ROLL WIDTH	118"
ROLL LENGTH	32 LY
WEIGHT / YD2	15.52 oz/yd2
THICKNESS	0.018" ± 5%
COLOR FASTNESS	8 Grade
YARN COUNT	50*48
BREAKING STRENGTH	Warp 3200N±5% Weft 2000N±5%

CARE AND CLEANING

Remove dust with vacuum cleaner or compressed air. Do not scrub. Do not use solvents or any abrasive substance which might damage the coating on the fabric. Clean with a sponge or a soft brush dipped in soapy water using mild detergent. Rinse with clean water. Leave the shade down until completely dry. You can also rub the fabric very gently with a clean white pencil eraser to remove small stains.

CERTIFICATIONS, TESTS, AND WARRANTY

CALIFORNIA TITLE 19	OEKO-TEX® STANDARD 100	UL GREENGUARD GOLD	ROHS COMPLIANT	10 YEAR WARRANTY	ASTM G-21 & E-2180	NFPA® 701-TM
FLAME RETARDANT	FREE OF HARMFUL CHEMICALS	HEALTHY INDOOR AIR QUALITY	FREE OF HARMFUL METALS	QUALITY GUARANTEED	BACTERIA & FUNGAL RESISTANCE	FIRE RETARDANT

YUMA®

www.yumausa.com